
COMMUNITY CONTACT INFORMATION



TABLE OF CONTENTS

| | |
|--|----|
| TABLE OF CONTENTS | 2 |
| AUTISM SPECTRUM DISORDERS SERVICES | 3 |
| BETHEL GOSPEL CAMP | 5 |
| HOME CARE | 6 |
| INDIVIDUAL AND FAMILY COUNSELING SERVICES | 7 |
| JUBILEE ELEMENTARY SCHOOL | 8 |
| KIDS FIRST | 9 |
| MEADOW LAKE LIBRARY | 10 |
| MEADOW LAKE ALLIANCE CHURCH | 12 |
| Facility Booking Agreement | 13 |
| MEADOW LAKE & DISTRICT CHAMBER OF COMMERCE | 15 |
| MEADOW LAKE EVANGELICAL FREE CHURCH | 16 |
| MEADOW LAKE HOSPITAL | 17 |
| MEADOW LAKE KidSport | 18 |
| MEADOW LAKE OUTREACH MINISTRIES INC. (COMMONLY KNOWN AS THE DOOR OF HOPE) | 19 |
| MIDWEST FOOD RESOURCES PROJECT | 20 |
| MINISTRY OF CORRECTIONS AND PUBLIC SAFETY –ADULT PROBATIONS | 21 |
| MINISTRY OF CORRECTIONS, PUBLIC SAFETY AND POLICING | 22 |
| MULTIWORKS VOCATIONAL TRAINING CORPORATION | 23 |
| NORTHWEST COGNITIVE DISABILITY STRATEGY | 24 |
| NORTH WEST FRIENDSHIP CENTRE | 25 |
| NORTHWEST REGIONAL INTERSECTORAL COMMITTEE (NORTHWEST RIC) | 27 |
| NUTRITION SERVICES, PRAIRIE NORTH HEALTH REGION | 29 |
| PARENT MENTORING PROGRAM | 30 |
| POPULATION HEALTH PROMOTION - | 31 |
| POSITIVELY PARENTING – EDUCATION & SUPPORT PROGRAM | 32 |
| PUBLIC HEALTH | 33 |
| PUBLIC HEALTH INSPECTION - COMMUNITY HEALTH SERVICES | 34 |
| ROBERT SIMARD CENTRE ADDICTION SERVICES | 35 |
| SALVATION ARMY (MEADOW LAKE) | 36 |
| SOCIAL SERVICES- CHILD & FAMILY SERVICES | 38 |
| TRANSITION PLACE EDUCATION CENTRE | 41 |
| WILLOW CREEK COMMUNITY GARDEN | 42 |

AUTISM SPECTRUM DISORDERS SERVICES (ASD)



CONTACT INFORMATION:

Autism Spectrum Support Worker
Prairie North Health Region
Meadow Lake, Sask.
Phone: 306 – 240 - 4195

DESCRIPTION OF SERVICES:

Consultant Services can include:

- Initial screen to identify children & youth with a suspected Autism Spectrum Disorder
- Coordinating and contributing assessments and diagnosis
- Developing & monitoring individualized program plans provided through the ASD Support Workers or other community partners
- Assisting families & linking them to appropriate programs & resources
- Available to children & youth up to 19 years of age

Support Services can include:

- Work directly with individuals and families that present ASD
- Deliver individualized program plan as designed & supervised by the ASD Consultant or other qualified health care professionals
- Services will be carried out in the most appropriate setting – home, office, child care or in the community
- Available to clients up to 6 years of age or until successful school transition has been completed

Respite Services:

- Supports summer programming & respite that offers social & recreational opportunities with ASD
- Available to children & youth with suspected or confirmed diagnosis of ASD – not graduated yet from high school

CRITERIA TO ACCESS SERVICES:

- If you suspect that your child has developmental delays – contact the Prairie North Health Region and an ASD Consultant will complete a screening. This will determine the child’s level for ASD and link you to services and supports that best meet the needs of your child.

HOW TO REFER:

- Anyone can refer – but parental permission is required:
Prairie North Health Region
Meadow Lake
306 – 240-4195
Autism Spectrum Support Worker

NAME OF AGENCY/ORGANIZATION:

BETHEL GOSPEL CAMP – CHURCH CAMP

CONTACT INFORMATION:

Executive Director

Address: Box 2583, Meadow Lake, SK S9X 1Z6

Phone: 240-4147 Summer phone: 236-3853

Fax: 236-6957 Email: campoffice@bethelgospelcamp.org

Website: www.bethelgospelcamp.org

DESCRIPTION OF SERVICES:

**Christian summer camps for children and youth.
Spiritual development and healthy relationships are emphasized.
The outdoor setting is maximized as a teaching tool.**

CRITERIA TO ACCESS SERVICES:

Camps are available for children and youth from ages six to nineteen. Campers must be able to function within two years of their age.

Registration fees apply. Some financial assistance is available.

HOW TO REFER:

Contact 240-4147 for more information.



NAME OF AGENCY/ORGANIZATION:

HOME CARE – PRAIRIE NORTH REGION

CONTACT INFORMATION:

HOME CARE TEAM MANAGER
HOME CARE ASSESSOR
306-236-1595

DESCRIPTION OF SERVICES:

- Nursing services;
 - Procedures or treatments as ordered by your doctor
 - Instruction and assistance in helping with management of specific health care need.
 - Assistance coordinating care with doctor and other health care professionals.
 - Support and care to clients and their families/friends who are dealing with a terminal illness.
- Wellness Clinics
 - Foot care
 - Blood pressure checks
 - Blood sugar checks
 - Vitamin B12 injections
 - Weight monitoring
 - Medication monitoring
 - Diet/nutrition counseling
 - Lifestyle and activity information
- Meals-On-Wheels
- Home Health Aides
 - Personal care, meal preparation, reassurance visits, palliative care and relief service for caregivers who are looking after a person with a disability or illness.
 - Cleaning and laundry services for clients with high needs.
- Assisted Living/Enriched Housing

CRITERIA TO ACCESS SERVICES:

An assessment will be done by the Home Care Assessor to determine what services you qualify for.

HOW TO REFER:

Call the Home Care office at 236-1595



NAME OF AGENCY/ORGANIZATION:

INDIVIDUAL AND FAMILY COUNSELING SERVICES

CONTACT INFORMATION:

236-1580

DESCRIPTION OF SERVICES:

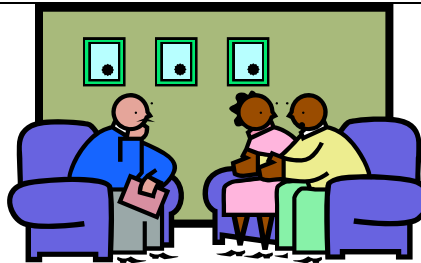
Individual and Family Counseling is composed of Mental Health Counselors and a Community Mental Health Nurse. Regular visiting Psychiatric services are also available on a monthly basis. Counseling services are provided to adults, children/youth, couples, and families.

CRITERIA TO ACCESS SERVICES:

Services are provided free of charge.

HOW TO REFER:

**Individuals can self refer or referral can be made by another party.
To refer call 236-1580.**



NAME OF AGENCY/ORGANIZATION:

JUBILEE ELEMENTARY SCHOOL

CONTACT INFORMATION:

COMMUNITY SCHOOL CO-ORDINATOR



DESCRIPTION OF SERVICES:

Moms' Morning Group – weekly support group for community moms, grandmas, aunties, caregivers. Childcare is provided for preschoolers. Takes place at Jubilee.

Families and Schools Together Program (F&ST) – 8 week program for Jubilee students and their families. Designed to help students and parents succeed. Evening program, takes place at Jubilee.

CRITERIA TO ACCESS SERVICES:

Moms' Morning Group – just need to be a member of local community.

F&ST – for Jubilee students & their families.

HOW TO REFER:

- have families self-refer.
- Contact Community School Co-ordinator to have them invite the person or family

NAME OF AGENCY/ORGANIZATION:

KIDS FIRST



CONTACT INFORMATION:

PROGRAM MANAGER - 236-6441

DESCRIPTION OF SERVICES:

Supports families with young children by enhancing parenting knowledge, providing support and building on family strengths.

CRITERIA TO ACCESS SERVICES:

Prenatal moms or moms with children under age five living in the town of Meadow Lake qualify.

Birth screens are also used to identify possible clients.

A 24 question In-Depth Assessment is used to measure level of need and to determine admission to the program

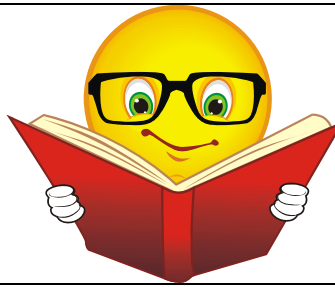
HOW TO REFER:

Referrals can be made by any community agency or also by self referral



NAME OF AGENCY/ORGANIZATION:

**MEADOW LAKE
LIBRARY**



CONTACT INFORMATION:

Librarian - Phone: 236-5396 Fax: 236-6282
Email: meadowlake.lib@lakeland.lib.sk.ca
Website: www.lakeland.lib.sk.ca
SPMC Box 9000
320 Centre Street
Meadow Lake, SK S9X 1Z8

DESCRIPTION OF SERVICES:

. There are over 25,000 items in the Meadow Lake Library collection alone that can be borrowed by patrons, and we offer more than just books.

Our programs and patron services include:

- ❖ Tours for schools or groups
- ❖ Toddler Storytime on Fridays from 10-10:30 and 11-11:30
- ❖ French Storytime on selected Saturdays
- ❖ Requesting books from libraries across SK and North America – email ill.meadowlake@lakeland.lib.sk.ca
- ❖ Exam proctoring free of charge
- ❖ Photocopying and faxing
- ❖ Access to online databases for information, recreation and education – for example: fix your car, find a reference for a paper, or choose a new author

Access our online services at www.lakeland.lib.sk.ca:

- ❖ Search our catalogue at home, in the office or at the library
- ❖ Place a hold on items from other branches in the Lakeland Library Region catalogue or from other regions in Saskatchewan through the Gateway catalogue
- ❖ Review your record to renew books, see items checked out, due dates and fines
- ❖ Internet access is free but you must have a library card/photo ID in order to log on

Our collection includes:

- ❖ Microfilm reader & ordering-in microfiche
- ❖ Digital magnifying reader
- ❖ Large print books
- ❖ Books in French, Cree and Spanish
- ❖ Magazines to read in-house and check out
- ❖ Audio books in tape, CD, and MP-3 formats
- ❖ Children's book and tape sets, board books, and level readers
- ❖ Video's and DVD's for entertainment and education

Reference books for in-house use only

CRITERIA TO ACCESS SERVICES:

You will need to have ID that proves residence in the Lakeland Library Region: either one of the following: SK Driver's License (both parts), Library Card from another region; or two of the following: SGI Photo ID, Indian Status Card, Métis Nation Photo ID, Passport, rent receipts, utility bills, tax bills, postmarked mail with your name and address on it (when using two pieces of ID one piece must have your picture and one piece must have your address).

If you are here as a visitor or for a limited amount of time, you can get a temporary library card, however you must still show ID and pay a \$40 deposit.

HOW TO REFER:

No referrals needed.

NAME OF AGENCY/ORGANIZATION:

MEADOW LAKE ALLIANCE CHURCH

CONTACT INFORMATION:

**SENIOR PASTOR
ASSOCIATE PASTOR
ADMINISTRATIVE ASSISTANT
236-6561
805 5TH ST W**



DESCRIPTION OF SERVICES:

YOUTH PROGRAMS FOR JUNIOR AND SENIOR HIGH

**PASTORAL COUNSELING FOR INDIVIDUALS, MARRIAGE,
PRE-MARRIAGE, AND FAMILIES**

ADULT BADMINTON

FACILITY RENTAL: MEETING ROOM, GYM, KITCHEN FACILITIES

CRITERIA TO ACCESS SERVICES:

Rental agreement (see attached)

HOW TO REFER:

Rental agreement (see attached)

Meadow Lake Alliance Church

805-5th Street West, Meadow Lake, SK S9X 1V1
Phone: 306-236-6561 Fax: 306-236-6957 Email: mlalliance@sasktel.net



Facility Booking Agreement

*ALL FACILITY BOOKINGS MUST BE APPROVED BY THE BOARD OF ELDERS OR THEIR DESIGNATE
(with the exception of regular ministry events of Meadow Lake Alliance Church)
i.e. events planned & supervised by church staff or agencies.*

Name of Group: _____

Bill To: _____

Event/Activity: _____

Event Date: _____ Time: _____ Approx. Number of Participants _____

Set up/Rehearsal Date & Time: _____

Third Party Caterer _____

Room(s) or Equipment requested: _____

I have read, understand and agree to the terms of use as attached; and, on behalf of the above-named group, I accept responsibility for the equipment and/or facility use:

First Contact Name: _____ Signature: _____

Address: _____

Home Phone: _____ Work Phone: _____

EQUIPMENT BOOKING

(Electronic and/or Sound Equipment are only available to Meadow Lake Alliance Church
ministry events or by permission of Pastor or Elders)

Equipment Requested: _____

Date Wanted: _____ Date Taken: _____

Date Returned: _____

Picked Up By: _____ Signature: _____

Date Returned: _____

Approved: _____ Signature: _____

Comments: _____

Equipment or Facility Terms of Use

Conditions of use:

- The goals and purpose of any user shall not distract from the witness of Jesus Christ.
- No tobacco use in the church.
- No alcoholic beverages on church premises.
- Children under 18 may not use the gym unless they are supervised by a parent or guardian.
- No use of church sound equipment unless authorized by the sound coordinator.
- Please clear tables and place bagged garbage in dumpster outside.
- Please inform someone at the office as soon as possible of any damages. Usually the user is responsible for repair or replacement cost; let's talk!
- The facility will be clean when the renter arrives. The renter is responsible for any clean-up they require from time of entry to time of departure or for payment of janitorial fees.

Clean Up:

- Please ensure that all equipment and furnishings used or moved are returned to the original location in an acceptable manner.
- Church equipment is not to be removed from the church without permission.
- Please ensure that all kitchen equipment and utensils are washed, sanitized and returned to the assigned cupboards in an acceptable condition.

Please Note:

- Meadow Lake Alliance Church is not responsible for lost or stolen articles of users.
- Meadow Lake Alliance Church is not responsible for any injury or death to any person using church facilities

Facility or Equipment Use Costs

The costs below do not apply to ministry events of the Meadow Lake Alliance Church (i.e. events planned and supervised by Church staff or agencies), or events exempt by the Board of Elders or their designate.

| | |
|--|---|
| Sanctuary (per 4-hour block)... \$150.00 _____ | Other (e.g. Equipment Rent) _____ |
| Kitchen 100.00 _____ | <i>For Use off site</i> |
| Gym for first hour 40.00 _____ | Chair \$ 1.00 chair _____ |
| Gym per subsequent hour 10.00 _____ | Table \$2.50 table _____ |
| Fellowship Hall (per 4-hour block) 70.00 _____ | Total _____ |
| Janitorial Cost (per event): 75.00 _____ | 25% Deposit or \$100 Received ... _____ |
| In addition to general janitorial cost: | (Please post-date cheques 30 days prior to event) |
| Set-up & take down chairs only | Amount Remaining _____ |
| (Sanctuary & Gym) 50.00 _____ | Date Paid in Full _____ |
| Set-up & take down chairs & tables | Received By: _____ |
| (Sanctuary & Gym) 100.00 _____ | Or Waived By: _____ |
| Sound Technician 50.00 _____ | |

**PLEASE MAKE ALL CHEQUES PAYABLE TO:
Meadow Lake Alliance Church**

NAME OF AGENCY/ORGANIZATION:

MEADOW LAKE & DISTRICT CHAMBER OF COMMERCE

CONTACT INFORMATION:

EXECUTIVE DIRECTOR



DESCRIPTION OF SERVICES:

The Meadow Lake & District Chamber of Commerce is a non-profit organization that mobilizes the talents of the business and professional community, thereby providing dynamic and vital leadership for the benefit of the entire community.

The Meadow Lake Chamber is a working partnership of over 100 business and professional people who, through an elected Board, focus their efforts on planning for future prosperity, development, educational excellence, promotion of the community and a commitment to seek new initiatives to help Meadow Lake.

The major responsibility of the Chamber is the community's economic well-being. It works to ensure that the principles of the productive free-enterprise system are continued and our resources facilitated by the growth of existing businesses and the fostering of new ones. The development of new and diversified businesses will result in a firmer economic base for future generations of Meadow Lake.

CRITERIA TO ACCESS SERVICES:

One must be a member of the Chamber to benefit from the services.

HOW TO REFER:

Phone: 306.236.4061

Fax: 306.236.4031

Website: www.meadowadvantage.com

Email: mlchamberofcommerce@sasktel.net

Mail/person:

Hwy 4 south (tourist building)

P.O. Box 847

Meadow Lake, SK S9X 1Y8

NAME OF AGENCY / ORGANIZATION

MEADOW LAKE EVANGELICAL FREE CHURCH

CONTACT INFORMATION:

Pastor or Associate Pastor
913 5th Avenue West
Meadow Lake, SK S9X 1A4
Telephone: 236-5288
Fax: 236-1979
Email: efree@sasktel.net
Web site: www.efreemeadowlake.ca



DESCRIPTION OF SERVICES:

Sunday School: Every Sunday (except for the months of July & Aug) at 9:30 am. for ages 2-adult

Sunday Morning Worship - Sunday at 10:45 am

Youth Groups:

Junior Youth (grades 6-9) meet weekly on Thursdays from 7- 8:30 pm

Senior Youth (grades 10-12) meet weekly on Wednesdays at 7 pm

Kids' Club: Monday Nite Live for boys & girls (grades 2-5) starting Sept 8th (every second Monday)

Adult Small Groups

Pastoral Counselling

CRITERIA TO ACCESS SERVICES:

236-5288

HOW TO REFER:

Contact Pastor, Associate Pastor or Admin. Assistant

NAME OF AGENCY/ORGANIZATION:

MEADOW LAKE HOSPITAL



CONTACT INFORMATION:

DIRECTOR OF ACUTE CARE - (306)-236-1500

DESCRIPTION OF SERVICES:

Emergency Department – 24 hours per day
Medical Ward – 14 beds
Paediatrics – 4 cribs
Surgical - 8 beds
Cardiac Observation- 2 beds
Obstetrics – 2 labor; 4 postpartum beds
Laboratory services – Monday to Friday 8 am to 4 pm
X-ray Services – Monday to Friday 8 am to 4 pm
Diabetes/Heart Care education – Monday to Friday – by appointment
Wound Care Referrals
Itinerant Specialists (Gyne, Orthopedics, ENT) approximately every 6 weeks

CRITERIA TO ACCESS SERVICES:

Emergency – persons arriving in the Emergency Department are “triaged” or assessed according to a national system and determined as Resuscitation, Emergent, Urgent, Less urgent and Non-urgent.
Wait times or referrals to the physician’s clinic will be according to the system.
Admissions to hospital are with a physician’s order only.
Surgeries (elective) are booked by local surgeons through the clinic
Outpatient minor surgery procedures are booked by attending physicians through the clinic.
Wound Care referred by physician / nursing staff
Consults booked for Itinerant Surgeons by the physician through the clinic

HOW TO REFER:

Emergencies may present at the emergency department.
Emergencies include: broken bones, chest pain, sudden-severe headache, trouble breathing, eye and head injuries, suicide attempts, cuts that are bleeding and require stitches, babies and young children with a temperature, pregnant women with unusual pains or bleeding

Non –emergent health conditions should be seen at the clinic weekdays for more information and appointments call – 236-5661

NAME OF AGENCY/ORGANIZATION:

MEADOW LAKE KidSport



CONTACT INFORMATION:

236-5614 or 236-4491

DESCRIPTION OF SERVICES:

KidSport is a children's charity designed to assist families with financial obstacles in enrolling their children in sporting activities.

CRITERIA TO ACCESS SERVICES:

Application forms are available at all Meadow Lake Schools, KidsFirst and Early Childhood Services. All applications are reviewed by the Meadow Lake KidSport committee and fees are paid on behalf of families directly to the sporting group by KidSport.

HOW TO REFER:

By filling out an application form which requires an adult endorsement which is explained on the form.

NAME OF AGENCY/ORGANIZATION:

MEADOW LAKE OUTREACH MINISTRIES INC.
(COMMONLY KNOWN AS THE DOOR OF HOPE)

CONTACT INFORMATION:

EXECUTIVE DIRECTOR 236-5537

DESCRIPTION OF SERVICES:

- Partners for Success: A pre-employment program for those with barriers to employment ages 16-65
- The Hope Center: A fourteen apartment block for those in transition and low rental.
- Tiny Treasures Child and Family Services: Child Care Facility
- The Door of Hope: A community drop in center providing free coffee/tea and a daily lunch served noon to one pm. Monday to Friday including public holidays
- Meadow Lake Community Food Bank: Open Mondays, Wednesdays and Fridays 1-4pm. Referrals required from the Friendship Center, Social Services or a professional agency worker. Two Hampers per person a month. Emergencies can be dealt with if a professional worked contacts the coordinator of the Food Bank, 236-5537
- Youth Mentoring Program: Ministry of Corrections, Public Safety and Policing
- Youth Restitution Program: Ministry of Corrections, Public safety and Policing
- Stop Lift Program: Ministry of Correction and Public Safety and Policing
- Fine Option Community Service Program: Ministry of Corrections, Public Safety and Policing

CRITERIA TO ACCESS SERVICES:

Tiny Treasures self referral
Partners for Success personal referral
Food bank as above
Door of Hope drop in



HOW TO REFER:

s/a

NAME OF AGENCY / ORGANIZATION

MIDWEST FOOD RESOURCES PROJECT

CONTACT INFORMATION:

PROGRAM COORDINATOR - 236-3966

DESCRIPTION OF SERVICES:

Fresh Food Box- Contains fresh, quality vegetables, fruits and grains which are purchased from local growers when available. Customers order boxes in advance and pick up the last Thursday of the month.

Collective Kitchens- A small group of people get together to prepare meals in bulk to take home to their families.

Kids in the Kitchen- Offered in the schools as an after school program where members make supper and take it home to their families.

CRITERIA TO ACCESS SERVICES:

Anyone can access

HOW TO REFER:

Call 236-3966



NAME OF AGENCY/ORGANIZATION:

MINISTRY OF CORRECTIONS AND PUBLIC SAFETY –ADULT PROBATIONS

CONTACT INFORMATION:

Telephone 306-236-7527
Fax 306-236-2627

DESCRIPTION OF SERVICES:

Help Clients recognize high risks situations and help them develop relapse prevention plans.

We lack services in:

- Domestic Violence Abusers
- Anger Management
- More Community Service work that leads to employment and /or work experience
- Volunteer Programs that lead to employment and / or work experience
- Life Skills
- Sex Offender Program

CRITERIA TO ACCESS SERVICES:

By being placed on:

- Conditional Sentence Orders,
- Probation Orders,
- Community Service Orders or
- Restitution Orders by the Justice System

HOW TO REFER:

NAME OF AGENCY/ORGANIZATION:

**MINISTRY OF CORRECTIONS, PUBLIC SAFETY
AND POLICING**

CONTACT INFORMATION:

Unit 7, 101 Railway Place
Meadow Lake, Saskatchewan
S9X 1X6

Telephone (306) 236-7565
Fax (306) 236-7562

DESCRIPTION OF SERVICES:

Community Youth Workers:

- Monitor youth's compliance with Court orders through regular meetings with clients and families.
- Refer clients to varying resources in the community to assist in reducing recidivism in youth.
- Complete Court ordered reports incorporating youth's risks and strengths as identified by youth workers through administration of individual LSI –SK risk assessments.

Extra Judicial Sanctions / Alternative Measures Coordinator:

- Receive and review referrals from the Crown / RCMP / Ministry of Environment after a youth or adult is approved for the Extra Judicial Measures Program.
- Refer clients to a Justice Worker or Service Provider to complete a Community Justice Forum / Mediation / Conference; with the objective of a mutually agreed contract for compensation between the offender and the victim, outside the regular Court system.
- Recruit, Train, Supervise and Retain Service Providers.

CRITERIA TO ACCESS SERVICES:

Youth Court orders or Court ordered reports are required access the services of a Community Youth Worker.

Crown / RCMP / Police / Ministry of Environment refer clients to the Extra Judicial Sanctions Program.

HOW TO REFER:

All referrals to our Ministry are received by the Courts or Crown Prosecutor.



NAME OF AGENCY/ORGANIZATION:

MULTIWORKS VOCATIONAL TRAINING CORPORATION

CONTACT INFORMATION:

Address:
709 Sergent Ave
Meadow Lake, Sk
S9X 1H9

DESCRIPTION OF SERVICES:

Multiworks provides residential, vocational, transportation, and employment supports for adults with cognitive disabilities.

SARCAN Recycling Meadow Lake is a subsidiary enterprise of Multiworks

SARRC Eco Centre is a used oil and filter collection service operated by Multiworks

CRITERIA TO ACCESS SERVICES:

As established by Community Living Division of Social Services - services as described above for adults with cognitive disabilities primarily between the ages of 22-64.

HOW TO REFER:

ph. 236-3200 ext 222
fax. 236-3335
email: mwexedir@sasktel.net



NAME OF AGENCY/ORGANIZATION:

NORTHWEST COGNITIVE DISABILITY STRATEGY

CONTACT INFORMATION:

Cognitive Disability Consultant
Ph: 306-825-2828
Fax 306-825-3391

DESCRIPTION OF SERVICES:

CDS provides support for people with cognitive disabilities where there are gaps in the existing services in the community. The goal of CDS is to encourage existing community services to work towards an integrated plan for the individual, reducing the gaps in the systems. There are four areas of support available through CDS:

1. Training/Community Capacity Building: The consultant can provide specialized training regarding support strategies and information to improve the knowledge and skills of family members, caregivers, and service providers who provide assistance/support to an individual with cognitive disabilities.
2. Enhanced Consultation to Case Planning: The consultant can assist families/individuals in developing a case plan that suits their needs
3. Behavioural Support/Consultation: The consultant can provide support through behavioural consultation, assessment and guidance for implementation to parents, caregivers or service providers where necessary.
4. Flexible Funding Program: This is a pool of money that can be accessed by individuals/families to purchase services that are not available in the community, pay for respite, mentors, travel expenses related to the services required, personal care items et cetera. Please note that this service is income tested, which means that funding is dependent on the level of need (which is determined by an assessment) and has an income cut off.

CRITERIA TO ACCESS SERVICES:

Individuals qualify for CDS support if they fulfill 5 criteria:

1. There must be limitations in learning and processing information that affect a person's ability to retain information, learn new skills, make good decisions and communicate with others
2. There are behaviours which reduce a person's ability to function socially and emotionally
3. There are developmental challenges that limit a person's ability to care for themselves, their level of independence and/or their ability to participate in work, leisure or the community
4. Limitations are typically long term
5. There are needs that are not able to be met through existing programming in the community.

HOW TO REFER: Contact the Cognitive Disability Consultant for an Information Package. Packages are also often available through community services.

NAME OF AGENCY/ORGANIZATION:

NORTH WEST FRIENDSHIP CENTRE

CONTACT INFORMATION:

Executive Director / Administrator
205 Centre Street
Meadow Lake, Sk S9X 1Z2
(306) 236-3766
(306) 236-5451 (fax)



DESCRIPTION OF SERVICES:

Teen and Young Parents:

Provide pregnancy counseling to expectant birth parents regarding pregnancy, parenting and adoption options. Life choice planning for parent and child. Life Skills management counseling. Educational and vocational counseling and referral with emphasis on motivating young parents to continue their education and to seek training and employment options. Offers group support.

Family Violence Prevention:

Provide education, encouragement and support to enable communities in the NW region of the province to address family violence issues effectively. To initiate awareness and education about family violence issues effectively. Develop community information resource centres.

In Home and Family Support:

Provides emotional support and guidance in home for families at risk. Assist with parenting, budgeting, nutrition, hygiene and home management. Assist with children one on one when required. Help families to develop confidence and problem solving skills.

Aboriginal Court Worker

Assist aboriginals accused to understand their rights, options and responsibilities including court procedures before the criminal courts. Provide counseling, information and referral services to clients. Assist the client to obtain legal advice.

Other Side Youth Centre:

117 2nd Street W
Meadow Lake - (306)-236-4302

Provides a secure, culturally relevant setting for youth. To maintain an open door policy for all youth. Develop an action plan and create programs with the input from the youth that will enhance social development and build self-esteem, education, employment and training opportunities. Reduce alcohol and drug abuse within the community. Reduce violence and build a safer community.

Healthy Babies Right from the Start:

Focuses on pregnant women to ensure they have healthier pregnancies. Services include: dietary assessment and nutritional counseling, milk supplements, fruit and vegetable supplements, healthy

lifestyle education and breast-feeding education and support. Interaction with pregnant and parenting women occurs in group, individual and home visits, as well as various activities and resources, while working in partnership with other services in the community.

CRITERIA TO ACCESS SERVICES:

**North West Friendship Centre office hours are 8:30 a.m. to 4:30 p.m. Monday to Friday.
“The Other Side” youth centre hours are 4:00 p.m. to 10:00 p.m.
Phone numbers as above.**

HOW TO REFER:

- | | |
|--|--|
| <ol style="list-style-type: none">1. Anyone can access services and2. Any agency can refer or self referral | |
|--|--|

NAME OF AGENCY/ORGANIZATION:

**NORTHWEST REGIONAL INTERSECTORAL
COMMITTEE (NORTHWEST RIC)**

CONTACT INFORMATION:

Office of the Northwest RIC, 1146 – 102nd Street, North Battleford, S9A 1E9,
Phone: 306-446-7624
Fax: 306-446-7586.

DESCRIPTION OF SERVICES:

The Provincial Human Services Integration Forum (HSIF) and the Regional Intersectoral Committees (RICs) work in partnership with community to respond to the diverse needs of the people served. The Northwest RIC provides a forum and coordinating link for human service leaders within the region to develop and communicate indicators, shared priorities, evaluation frameworks and shared outcomes.

The Intersectoral Committees were formed to facilitate the integration of existing and emerging human services at the regional level. The vision identified Saskatchewan human services as “innovative, responsible and effective and contributing to the well-being of all Saskatchewan people.” To achieve this vision, attention to linkages between provincial department mandates, boundaries, information systems, case management, community development and project evaluation and outcomes are emphasized.

The Northwest RIC is an innovative forum for collaboration within human service sectors and provides services to the public that streamlines and simplifies client access and/or bridges traditional organizational or program boundaries. Some examples of integrated policy development work in the Northwest Region include:

- Cognitive Disability Strategy
- Wraparound (Wraparound 5 Tier Response Framework)
- Population Health Promotion Framework
- Early Childhood Development including KidsFirst Programs
- Creating Foundation for Success through community interagency committees
- Grant Adjudication Process for Community Initiatives Fund – Community Grant Program and Student Employment Experience
- Engaging Communities in Crime Reduction.



Supporting Human Service Integration

CRITERIA TO ACCESS SERVICES:

The Meadow Lake Interagency Committee is a valued stakeholder within the regional intersectoral framework with representation on the Northwest Grant Adjudication Team and integral link to the community and surrounding area. Your voice is important as well as your regular participation at the Meadow Lake Interagency to have a forum for communication and for policy development based on the needs of your community.

HOW TO REFER:

Contact the office of Northwest RIC, your agency representative on the Executive Committee of Northwest RIC and bring your thoughts, dreams, hopes and experience to the Meadow Lake Interagency Committee.

NAME OF AGENCY/ORGANIZATION:

**NUTRITION SERVICES,
PRAIRIE NORTH HEALTH REGION**

CONTACT INFORMATION:

REGISTERED DIETITIAN

DESCRIPTION OF SERVICES:

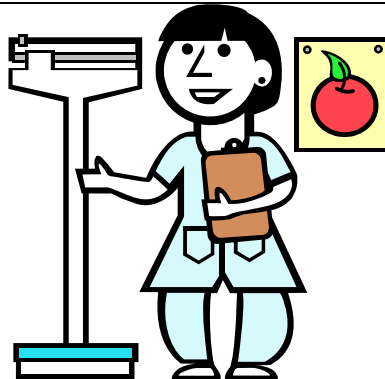
Community, Inpatient and Outpatient Nutrition Services

CRITERIA TO ACCESS SERVICES:

Self referral or referral by healthcare provider.

HOW TO REFER:

Phone, email or fax 306 – 236-1500



NAME OF AGENCY/ORGANIZATION:

PARENT MENTORING PROGRAM



CONTACT INFORMATION:

COMMUNITY LIAISON WORKER - 236-1581

DESCRIPTION OF SERVICES:

The Parent Mentoring Program is a preventative, early intervention, outreach program which matches young people, who are prenatal or who are parenting a child up to the age of five years, with a volunteer mentor. Usually the match is for a period of one year but can be extended beyond that time if both the mentor and the parent agree that it is best. The young parent may chose to with draw from the match at any time.

Mentors are screened, trained and oriented and have access to support staff. The activities that the mentor and parent do together are determined by their interests and energy level. The mentor is encouraged to focus on supporting the parent in their personal growth rather than focusing directly on child development though the mentor also supports the young parent in their parenting goals.

The objective of the Parent Mentoring Program is to provide knowledge, skills, motivation and support to help the young parent think, feel and be the best they can be in their role as parent. In addition to the benefits of mentor/ parent relationship, a variety of group opportunities as well as referrals to other services will be offered to clients who come onto the Parent Mentoring Program.

The young parent must want to be matched with a volunteer mentor.

CRITERIA TO ACCESS SERVICES:

The young person being referred must either be prenatal or parenting at least one child under the age of five years. We give priority to single parents under the age of 25 years but will consider a referral for any parent who is prenatal or parenting a young child. The client is intended to be moderate risk. Clients who have a history of abusing drugs or alcohol may benefit from the services and support by the Parent Mentoring Program. Clients who are actively abusing alcohol or drugs would be referred to other services. Clients living anywhere in the Prairie North Health Region can access services; however, we do not offer services on reserve.

Clients having risk factors such as being a young parent, lone parenting, isolation (e.g. a new immigrant), lacking positive social supports, economic disadvantage, low education level , under-employed or unemployed or having moderate disabilities may benefit from the Parent Mentoring Program

HOW TO REFER:

Any agencies may refer a young person to the Parent Mentoring Program. Clients may also self refer. Referrals can be made by calling 236-1581 in Meadow Lake

NAME OF AGENCY/ORGANIZATION:

**POPULATION HEALTH PROMOTION -
PRAIRIE NORTH HEALTH REGION**

CONTACT INFORMATION:

**Health Promotion Coordinator
Community/Public Health Services
Northwest Health Facility
Phone: (306) 236-1570**

Or:

North Battleford

**Primary Health Centre
(Frontier Mall)
11427 Railway Ave
Phone: (306) 446-6400**



DESCRIPTION OF SERVICES:

Population Health Promotion works with community groups and health professionals to identify barriers to health and to support ways to improve quality of life.

CRITERIA TO ACCESS SERVICES:

Community groups and health professionals who are interested in reducing barriers and improving overall health

HOW TO REFER:

Contact Health Promotion Coordinator

NAME OF AGENCY / ORGANIZATION

POSITIVELY PARENTING – EDUCATION & SUPPORT PROGRAM

CONTACT INFORMATION:

Parent Education Coordinator
Box 238 ML, SK S9X 1Y2 Parent Education
Coordinator
Box 238 ML, SK S9X 1Y2
Ph.306-236-4804
FAX 306-236-4867
positivelyparenting@sasktel.net
<http://nwsd.ca/schools/chs/positivelyparenting>



DESCRIPTION OF SERVICES:

We are a community based parenting program aimed at promoting the value of parent education. Our organization is for all individuals involved in raising children, newborns to teens. We have resources available that will make the most important job of your life easier, more rewarding and enjoyable.
We offer a free lending library with over 1000 resources.
We offer presentations, information and referrals, parenting classes and playgroups.
All services are free!!!

CRITERIA TO ACCESS SERVICES:

Open to anyone/self referral also welcome

HOW TO REFER:

Call Parent Education Coordinator

NAME OF AGENCY/ORGANIZATION:

PUBLIC HEALTH



CONTACT INFORMATION:

Public Health Services
Northwest Health Facility
#9 – 711 Centre Street
Meadow Lake, SK. S9X 1E6
236-1570

DESCRIPTION OF SERVICES:

Public Health Nursing provides a variety of services to people in their communities including immunization clinics, education, prevention, and referrals to other services. Specific public health nursing services include:

Child Health Clinics and *Walk In Clinic* provide an opportunity to improve child health and wellness through counseling and immunization.

Prenatal Classes offer information about pregnancy, delivery and care of newborns.

Postnatal Services offer counseling and support to mothers and parents after the baby is born.

Breastfeeding Support Program offers counseling and support for new mothers.

School Health Services are offered in the schools for students and teachers for health advice and immunizations.

Harm Reduction Program offers counseling and needle exchange services to prevent the spread of disease.

Communicable Disease Follow-Up to prevent the spread of communicable disease in our community.

Adult Immunization Clinics offer travel consultations as well as travel and flu immunizations.

CRITERIA TO ACCESS SERVICES:

No criteria required to access public health nursing services. Please call with your questions!

HOW TO REFER: Call 236-1570



NAME OF AGENCY/ORGANIZATION:

**PUBLIC HEALTH INSPECTION –
COMMUNITY HEALTH SERVICES**

CONTACT INFORMATION:

Public Health Inspector Telephone: 236-1576
Community Health Services Facsimile: 236-4974
No. 9, 7 - 11 Centre Street
Meadow Lake, SK. S9X 1E6

DESCRIPTION OF SERVICES:

Through education, consultation, inspection, monitoring and enforcement, Public Health Inspectors protect the environment and the health of the public from physical, chemical and biological hazards. This is accomplished by enforcing The Public Health Act, and the Tobacco Control Act, as well as other regulations and related bylaws.

Regulations relating to swimming pools, bakeshops, milk products, plumbing and drainage, public eating establishments, sanitation, public accommodations, public water systems and communicable disease control are enforced by Public Health Inspectors.

Duties involve:

1. Inspect restaurants, food processing and handling areas and liquor outlets
2. Apply public water legislation
3. Inspect plumbing and private sewage disposal systems
4. Assess plans and specifications for various types of facilities
5. Conduct environmental surveys and inspections
6. Conduct and interpret chemical tests
7. Provide expertise on the control of rodents, insects, communicable diseases, air and water pollution
8. Provide expertise on the private water systems
9. Conduct education programs for the public on public health and safety issues
10. Liaise with different governmental and non-governmental organizations
11. Investigate complaints and involving food, air and water
12. Perform defined role in health emergency or disaster.

CRITERIA TO ACCESS SERVICES:

See section Description of Service above, and if it applies, please contact the Public Health Inspector

HOW TO REFER:

To make contact with the public health inspector, you can do this by telephone, letter, and facsimile. You can even send an email to pubhealth@pnrha.ca



NAME OF AGENCY/ORGANIZATION:

ROBERT SIMARD CENTRE ADDICTION SERVICES

CONTACT INFORMATION:

PROGRAM CO-ORDINATOR 236-1540

DESCRIPTION OF SERVICES:

Outpatient Services: qualified addictions counselors provide a whole range of services, including assessments, intensive one-to-one counseling, education, and support.

Detoxification Services: a safe and comfortable environment in which the client is able to undergo the process of alcohol and other drug withdrawal and stabilization. Detoxification can last 7-10 days. Individuals must be 18 years of age or older.

CRITERIA TO ACCESS SERVICES:

Available to anyone who is concerned about their own use of alcohol, drugs, gambling, or about others' involvement with alcohol, drugs, gambling



HOW TO REFER:

Phone – 236-1540 for appointments

Phone – 236-1546 for Detox Unit

NAME OF AGENCY/ORGANIZATION:

SALVATION ARMY (MEADOW LAKE)

CONTACT INFORMATION:

Church: 236-5177;
Church Address: 212 - 2 St. West

Cell 240-5705; 240-5706
Thrift Store 236-4133

DESCRIPTION OF SERVICES:

Mission: "The Salvation Army exists to share the love of Jesus Christ, meet human needs and be a transforming influence in the communities of our world... starting with our own community of Meadow Lake and surrounding area."

Ministries and Services Include:

- ***Sunday Worship** Meetings and Adult Bible Class (each week)
- ***Music Ministry** beginnings (each week)
- ***T.I.M.S. and Prayer Night** on Wednesday @ 7:30 p.m. A once every 2 week evening where we share our stories, Bible study, Prayer and enjoy Tim Horton's Coffee!
- ***Youth Group** on Thursday evenings (occasionally on a Friday or weekend event) twice a month.
- ***Friday Night Drop-in** and Street Ministry each week at 9 p.m. - **Midnight.**
- * **Hospital and Pioneer Lodge visits** and ministry from time to time and as requested.
- * * **Volunteer Chaplin for the RCMP (Major Peter)**

- *Free Literature ministry available at our church and Thrift Store as well as other locations around Meadow Lake.
- ***Fire/Emergency/Disaster Response** when required or requested by RCMP or Fire Department.

- ***Thrift Store open Tues. - Friday @ 11 a.m. - 5 p.m.** Low-cost, very good quality and clean clothing, footwear, household items as well as other items. We also have a Coffee Nook where we serve excellent Fair Trade Coffee for a small donation (.25 - .50 depending on cup size) if people have the means - otherwise it is provided free-of-charge (with some limitations of course). Stay and enjoy or lids are provided for take-out!

- ***Family Food and Toy Hamper** Program each year at Christmas (criteria for this is explained in our advertising).

- *Provide Christian perspective counseling wherever possible, along with other ministries such as funerals and weddings (weddings are provided at the discretion of the Pastor's)

- *Provide a small amount of Food Assistance to those who require this and are not within the Door of Hope's Food Bank Boundaries (ie: Meadow Lake Town).

- *Refer people needing emergency short-term accomodation to either the Hope Centre or to the Empire Motel (depending on availability).

- *Able to assist in true emergency situations some transportation assistance as we are able (ie: Gas/ Bus Ticket).

- *Provide assistance in Camping Experience for kid's in the Summer.

*There are other things we do that aren't necessary to itemize - this is the main overview of what we strive to do, in the Name of Jesus and by His Grace and His Provision.

*There are no other employees on staff, though we do have some great helpers and volunteers! We do the best we can and as we are able! Some of these Ministries and Programs are scaled back or put on hold during July and August due to Camps, holidays and other travels (plus the need to be re-newed!)

Though we cannot guarantee it, we will do our best to respond - even if it is not during regular type hours.

Thrift Store: 223 Centre St. (right beside Mac's Decorating)

CRITERIA TO ACCESS SERVICES:

*Criteria for Admission? Just a genuine need.



HOW TO REFER:

Requests and or Referrals can be directed towards Peter and Karen Eason (Majors) @ Church: 236-5177;

Thrift Store 236-4133;

Peter Cell: 240-5705; Karen Cell: 240-5706.

NAME OF AGENCY/ORGANIZATION:

SOCIAL SERVICES- CHILD & FAMILY SERVICES

CONTACT INFORMATION:

#5 101 Railway Place, Meadow Lake, SK S9X 1X6
Phone: (306) 236-7500
Fax: (306) 236-7533
Toll Free: 1-877-368-8898



DESCRIPTION OF SERVICES:

Child Protection Services

In Child Protection Services, the Ministry investigates referrals, assesses family functioning and determines risk of safety to children. When safety risks are too great, children may be removed from their home and placed in foster care. The Ministry may provide counseling to families at risk to develop plans to better deal with the problems they are experiencing and work with them in establishing the supports they require.

Children's Services

The Ministry works with children in care and their foster parents and caregivers to plan and prepare the child's return home. While in care, the Ministry ensures that all the children's needs are being met (Health, Education, Social, Emotional, Cultural etc). Children may be placed in care on a permanent basis and will require long-term care and planning.

Foster Care

Children come into care under the authority of [*The Child and Family Services Act*](#) either through a voluntary agreement between Social Services and the parents, or by an order of the court. Support services are then provided to the child's family so the child can eventually return home. Until it is safe for the child to return home, Social Services provides a home or other residential placement that will best meet the needs of each child. The majority of children in the care of the ministry are placed in foster homes. Wherever possible, placements with extended family or within the child's cultural community are sought in order to maintain family and cultural connections.

Foster care is provided by families in the community who offer their homes to children who cannot live with their own families for a period of time. Before becoming approved to have children placed with them, foster families must pass

Child Protection Services

In Child Protection Services, the Ministry investigates referrals, assesses family functioning and determines risk of safety to children. When safety risks are too great, children may be removed from their home and placed in foster care. The Ministry may provide counseling to families at risk to develop plans to better deal with the problems they are experiencing and work with them in establishing the supports they require.

Children's Services

The Ministry works with children in care and their foster parents and caregivers to plan and prepare the child's return home. While in care, the Ministry ensures that all the children's needs are being met (Health, Education, Social, Emotional, Cultural etc). Children may be placed in care on a permanent basis and will require long-term care and planning.

Foster Care

Children come into care under the authority of [*The Child and Family Services Act*](#) either through a voluntary agreement between Social Services and the parents, or by an order of the court. Support services are then provided to the child's family so the child can eventually return home. Until it is safe for the child to return home, Social Services provides a home or other residential placement that will best meet the needs of each child. The majority of children in the care of the ministry are placed in foster homes. Wherever possible, placements with extended family or within the child's cultural community are sought in order to maintain family and cultural connections.

Foster care is provided by families in the community who offer their homes to children who cannot live with their own families for a period of time. Before becoming approved to have children placed with them, foster families must pass a thorough home review and orientation. Once approved, foster families must complete additional training related to the special needs of children in care and their families. Foster families come from all walks of life, and a variety of cultural, education and economic backgrounds. There are about 800 foster homes in the province.

Services to 16 and 17 Year Olds

The Child and Family Services Act gives the Ministry of Social Services the authority to provide support and services to 16 and 17 year old youth in certain circumstances where:

- the 16 or 17 year old appears to be in need of care and supervision; and
- there is no parent who is willing or able to take responsibility for the young person; or
- the young person cannot return to live with his or her family for reasons of safety.

CRITERIA TO ACCESS SERVICES:

Child Protection

Anyone who has a reason to believe that a child is being abused or neglected has a legal duty to report it. You are not expected to determine if a child is being abused or neglected, a trained social worker will make that determination. Members of the public are simply obligated by the law to report suspected abuse or neglect. If you do not report a suspicion of abuse or neglect, you could be fined up to \$25,000, or get a jail term of up to 24 months, or get both a fine and a jail term.

You can report information to:

- any Social Services office;
- a community crisis centre or unit (check the inside cover of your phone book);
- a police officer;
- a First Nations Child and Family Service Agency; or in the Meadow Lake area call toll free 1-866-637-7560

Foster Care Inquiry

Foster care is part of the range of resources and refers to the care provided within a family situation, to children who must live away from their own family. Foster care provides children a warm and safe environment where they get the care, supervision, support and guidance they need during the time they must live away from home.

We are looking for foster families from all walks of life and cultural, educational and economic backgrounds throughout urban and rural areas of the province. We especially need First Nations and Métis foster families, and families willing to accept teenagers.

If you would like to know more about the foster care program you may call toll free line at 1-800-667-7002.

Services to 16 and 17 Year Olds

The Child and Family Services Act gives the Ministry of Social Services the authority to provide support and services to 16 and 17 year old youth in certain circumstances where:

- the 16 or 17 year old appears to be in need of care and supervision; and
- there is no parent who is willing or able to take responsibility for the young person; or
- the young person cannot return to live with his or her family for reasons of safety.

HOW TO REFER:

Child Protection Services

To report abuse/ neglect in Meadow Lake and area, call toll free:
1-866-637-7560

Foster Care Inquiry

If you are interested in fostering or would like to know more about the foster care program you may call toll free line at 1-800-667-7002.

Services to 16 and 17 Year Olds

Youth can apply, by contacting the local Social Services office: 236-7500

NAME OF AGENCY/ORGANIZATION:

TRANSITION PLACE EDUCATION CENTRE

CONTACT INFORMATION:

PRINCIPAL

DESCRIPTION OF SERVICES:

EDUCATIONAL PROGRAM

CRITERIA TO ACCESS SERVICES:

CONTACT SCHOOL

HOW TO REFER:

CONTACT SCHOOL

NAME OF AGENCY/ORGANIZATION:

WILLOW CREEK COMMUNITY GARDEN

CONTACT INFORMATION:

Community Garden Coordinator or any Committee Member (call Town Office or Communities in Bloom group to inquire).

DESCRIPTION OF SERVICES:

The community garden provides green space and garden plots for physical and social well being and to encourage food production. The garden is managed and maintained with the active participation of all gardeners.

CRITERIA TO ACCESS SERVICES:

Our aim is to be all inclusive, therefore the garden is open to everyone. First consideration for plots may be given to agency groups wishing to participate. (On a yearly basis, a portion of the plots are reserved for groups from Multiworks, Door of Hope, Parent Mentoring Program, Midwest Foods and others). Community members of all ages and corners of our town add to the diversity, bringing a broad range of skills and experience. We ask that those who are able, volunteer some of their time and pay a small fee, in return for the space provided. If there are no plots remaining at time of inquiry, a person can join as a volunteer and share in the community crops such as strawberries, raspberries, rhubarb etc.



HOW TO REFER:

A phone call will put individual or family members on the list for a plot. Self referrals accepted.

INDEX

CHURCHES AND ORGANIZATIONS

| | |
|---|----|
| BETHEL GOSPEL CAMP | 5 |
| ALLIANCE | 12 |
| EVANGELICAL FREE | 16 |
| OUTREACH MINISTRIES – COMMONLY DOOR OF HOPE | 19 |
| SALVATION ARMY | 34 |

COMMUNITY PROJECTS

| | |
|-------------------------------------|----|
| WILLOW CREEK COMMUNITY GARDEN | 42 |
|-------------------------------------|----|

COMMUNITY - PRAIRIE NORTH HEALTH SERVICES

| | |
|---|----|
| AUTISM SPECTRUM DISORDER SERVICES | 3 |
| HOME CARE..... | 6 |
| INDIVIDUAL AND FAMILY COUNSELING | 7 |
| KIDS FIRST | 9 |
| CHAMBER OF COMMERCE | 15 |
| MINISTRY OF CORRECTIONS AND PUBLIC SAFETY (ADULT) | 21 |
| MINISTRY OF CORRECTIONS, PUBLIC SAFETY AND POLICING | 22 |
| NORTHWEST REGIONAL INTERSECTORAL COMMITTEE | 27 |
| NUTRITION SERVICES | 29 |
| PARENT MENTORING PROGRAM | 30 |
| POSITIVELY PARENTING- EDUCATION / SUPPORT | 32 |
| PUBLIC HEALTH | 33 |
| PUBLIC HEALTH INSPECTION | 34 |
| ADDICTION (ROBERT SIMARD) | 35 |
| SOCIAL SERVICES – CHILD AND FAMILY | 38 |

| | |
|----------------------------|----|
| MEADOW LAKE HOSPITAL | 17 |
|----------------------------|----|

SCHOOLS / EDUCATION

| | |
|--|----|
| JUBILEE ELEMENTARY | 8 |
| KidSPORT..... | 18 |
| LIBRARY | 10 |
| MIDWEST FOOD RESOURCES PROJECT | 20 |
| MULTI-WORKS VOCATIONAL TRAINING CORPORATION..... | 23 |
| NORTHWEST COGNITIVE DISABILITY STRATEGY | 24 |
| NORTHWEST FRIENDSHIP CENTRE | 25 |
| POPULATION HEALTH PROMOTION | 34 |
| TRANSITION PLACE EDUCATION CENTRE..... | 41 |